



By Appointment to
Her Majesty The Queen
Mount Makers
Dauphin Restoration Ltd
Oxford

Medals and Coins

Fit-out
Mobile
Workshop

Custom Made
Mounts and
Armatures

Restoration
Conservation

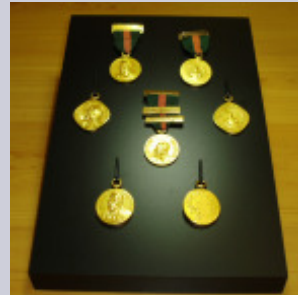
Replicas
Models

Casting
Milling
Sandblasting

Installation

Mail Order
Display Stands

Contact:
Alex Abbott
For further
Dauphin Data News



Medals and Coins displayed on Matt Black Acrylic Plinths with Acrylic support arms and recesses



Ribbons are clamped with an Acrylic bar and supported with Acrylic Pins



Acrylic support is backed with a mirror to reflect the reverse side of the Medal



Collection of Medals and Coins displayed at Wellington College using Sandblasted Acrylic



By Appointment to
Her Majesty The Queen
Mount Makers
Dauphin Restoration Limited
Oxford

Coins

Fit-out
Mobile
Workshop

Custom Made
Mounts and
Armatures

Restoration
Conservation

Replicas
Models

Casting
Milling
Sandblasting

Installation

Mail Order
Display Stands

Contact:
Alex Abbott
For further
Dauphin Data News



Solid Acrylic Plinth with routed top to secure Coin Case, which can be displayed open or closed, gives the artefact a stand alone importance. *(Left)*

A collection of nine Coins encased in a sandwich of clear Acrylic with an angled mirror to view the reverse of the coins. Each coins has a routed recess and then covered by an Acrylic layer and secured with brass screws. *(Below)*

