



By Appointment to  
Her Majesty The Queen  
Mount Makers  
Dauphin Museum Services Ltd  
Oxford

Museum  
Projects

Evocations

Casting

Milling

Sandblasting

## National Museum of Scotland

"The Trarain Treasure, a major hoard of late Roman silver in the Museum of Scotland, never looked as good as it does since being specially mounted by Dauphin"

That is the opinion of Fraser Hunter from the National Museums of Scotland's Department of Archaeology in Edinburgh, where Dauphin collaborated on displays in the Early People Gallery.

The work took six months to complete and involved constructing over 200 standardised acrylic panels to display graphics, plinths to raise objects to enhance viewing and design around 400 special mounts to manufacture. These had three functions: to support weak artefacts, raise objects for viewing and evoke the original form to fragmentary objects. The mounts were made either at Dauphin's Oxfordshire premises or in the on-site workshop for items with irregular shapes, to insure perfect fitting. The primary material used was sandblasted acrylic, which fitted well into the overall gallery design. The special mounts which support the objects and raised them for optimum clarity of viewing proved to be a great success. So too, and often most technically complex, were the evocations. Some of these such as shafts for spears and arrow heads, missing vessels for handles are simple but give greater meaning to the pieces; others, like the cast acrylic heads give reality to the several helmets in the collection.

Contact

John Harrison-Banfield  
Managing Director  
For further  
Dauphin Data News



By Appointment to  
Her Majesty The Queen  
Mount Makers  
Dauphin Museum Services Ltd  
Oxford

### Fragments of Roman Armour

Evocations

Casting

Milling

Sandblasting



Dauphin cast an acrylic torso to build up a replica roman armour to support the surviving fragments preserved in the peat bogs of Scotland. The replica was made in 2mm sand blasted acrylic from



archival drawings and fitted to the torso. The bands of acrylic were shaped to follow the contours of the fragile peices of armour and then stiched in situ with a fine nylon thread.



Contact  
John Harrison-Banfield  
Managing Director  
For further  
Dauphin Data News

**Dauphin Limited**

The Poultry Farm, Marsh Baldon, Oxon. OX44 9LJ UK

Tel +44(0)1865 343542 Fax +44(0)343307 Email [dauphin@dauphin.co.uk](mailto:dauphin@dauphin.co.uk) Web [www.dauphin.co.uk](http://www.dauphin.co.uk)



By Appointment to  
Her Majesty The Queen  
Mount Makers  
Dauphin Museum Services Ltd  
Oxford

# Dauphin

# Data News

## Helmets, Arrowheads, Vessels and Tools

Evocations

Casting

Milling

Sandblasting



Sand blasted acrylic has been moulded, cast or shaped to represent the missing part of the Roman artefacts, to bring them back to life and give them a comprehensible appearance.



Contact  
John Harrison-Banfield  
Managing Director  
For further  
Dauphin Data News

**Dauphin Limited** The Poultry Farm, Marsh Baldon, Oxon. OX44 9LJ UK

Tel +44(0)1865 343542 Fax +44(0)343307 Email [dauphin@dauphin.co.uk](mailto:dauphin@dauphin.co.uk) Web [www.dauphin.co.uk](http://www.dauphin.co.uk)



By Appointment to  
Her Majesty The Queen  
Mount Makers  
Dauphin Museum Services Ltd  
Oxford

# Dauphin

## Data News

### Torcs, Spearheads, Spoons, Buckles & War Trumpet

Presentation  
Supports

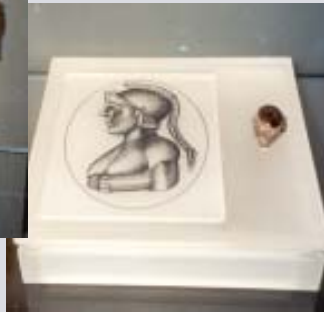


Casting



Three examples of methods to support and present the artefacts to give the best viewing aspect to the visitors of the museum.

Milling



The graphic panels are also made from sandblasted acrylic, likewise is the seal enlargement of the signet ring.

Sandblasting



Dauphin working on-site with the curator fitting the remains of a rare roman war trumpet to its support. A modern replica was made to represent the complete artefact.

Contact

John Harrison-Banfield  
Managing Director  
For further  
Dauphin Data News

